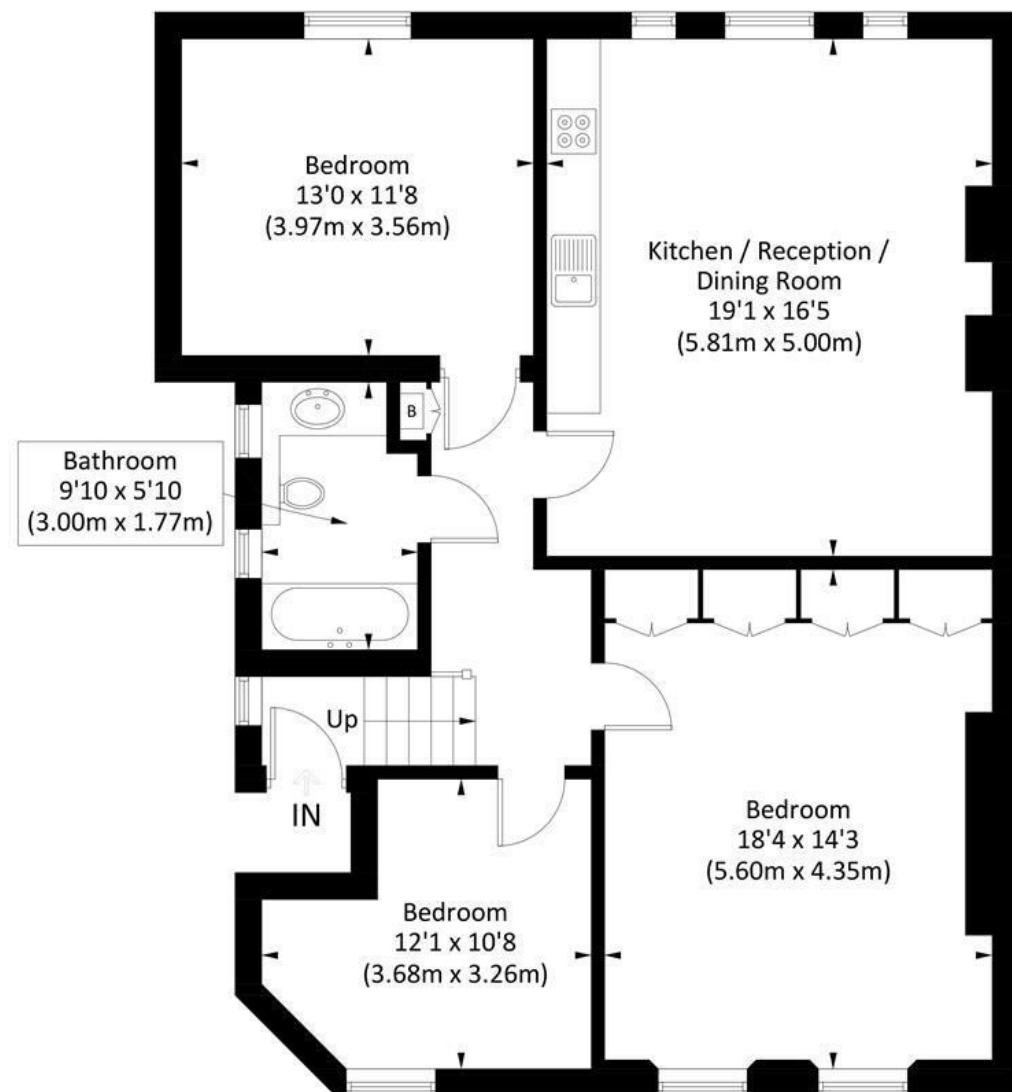


WARREN

The Putney Estate Agent

RAVENNA ROAD, SW15

Approx. gross internal area 1027 Sq Ft. / 95.4 Sq M



**First Floor
(1027 Sq Ft.)**

Illustration for identification purposes only, measurements are approximate, not to scale. Fourlabs.co © 2026 (ID1267866)

DISCLAIMER•These particulars are intended to give a fair and substantially correct overall description for the guidance of intending purchasers and do not constitute an offer or part of a contract. Prospective purchasers and/or lessees ought to seek their own professional advice.

•All descriptions, dimensions, areas, references to condition and necessary permissions for use and occupation and other details are given in good faith and are believed to be correct, but any intending purchasers should not rely on them as statements or representations of fact, but must satisfy themselves by inspection or otherwise as to the correctness of each of them.

•All measurements are approximate.



194 Upper Richmond Road, London SW15 2SH Also at: 139 Lower Richmond Road, London SW15 1EZ

E: sales@warrenputney.co.uk T: 020 8780 1100 F: 020 8780 0872

WARREN

The Putney Estate Agent

Ravenna Road, Putney, SW15

A superbly located and spacious three bedroom flat on the top floor of this imposing period house in the heart of Putney. Offered on a furnished basis and benefiting from a well maintained communal garden, the accommodation comprises an entrance hallway, bright and spacious reception room with open plan kitchen, three double bedrooms and bathroom. Ravenna Road is ideally located for all the amenities and transport Putney has to offer. Available now.



- THREE BEDROOM FLAT
- OPEN PLAN KITCHEN
- BATHROOMS
- TOP FLOOR
- EPC C

- LARGE RECEPTION ROOM
- THREE DOUBLE BEDROOMS
- COMMUNAL GARDEN
- PRIME LOCATION
- COUNCIL TAX BAND D

Per Month
£3,000 Per Month

E: sales@warrenputney.co.uk

T: 020 8780 1100 F: 020 8780 0872

warrenputney.co.uk

